

LOCAL CLIMATOLOGICAL DATA

Monthly Summary

May 2006

Station: Oakland, NJ

Latitude: 41° 02' 26" N Longitude: 74° 13' 58" W Elevation (Ground): 272 feet Time Zone: Eastern

Date	Temperature					Humidity	Deg. Days		Precip Ty 1 fog 2 hvy fog 3 thunder 4 ice plt 5 hail 6 glaze 7 duststm 8 smk, hz 9 blw snw	Snow Cvr	Precip		Pressure Adj. to Sea Level			Wind						Sun			
	Maximum	Minimum	Average	Mean	Dew Point		Mean	Heating Base 65°F			Cooling Base 65°F	Water Equivalent	Ice Pellets Snow	Maximum	Minimum	Mean	Avg Speed	Res Speed	Res Dir	Peak			Minute		
																				Speed	Dir		Speed	Dir	Speed
1	2	3	4A	4B	5	6	7	8	9	10	11	12	13	14	15	16	17	18	19	20	21	22	23		
1	72.7	34.3*	53.5	54.2	27	45	11	0	0	0.00	0.0	30.35	30.15	30.261	2.2	2.1	29	22	NE	9	359			
2	71.5	38.6	55.1	53.9	34	51	9	0	0	0.00	0.0	30.17	29.82	29.965	1.4	1.2	1	13	NE	7	4			
3	70.8	45.8	58.3	57.4	45	67	6	0	0	0.00	0.0	29.87	29.76	29.823	1.7	1.4	352	17	NNW	8	344			
4	83.6	48.6	66.1	64.5	44	56	0	2	0	0.00	0.0	29.88	29.68	29.786	1.2	0.8	321	14	NW	6	341			
5	79.0	51.3	65.1	66.2	43	48	0	0	0	0.00	0.0	29.77	29.67	29.710	1.6	1.3	312	12	NNW	6	7			
6	75.3	45.1	60.2	56.1	41	59	5	0	0	0.00	0.0	29.98	29.69	29.775	1.3	1.2	343	21	NNW	10	334			
7	68.1	35.5	51.8	52.8	33	50	13	0	0	0.00	0.0	30.11	29.97	30.054	1.0	0.6	200	10	N	5	186			
8	49.1	46.4	47.8*	47.4	42	81	17	0	0	0.00	0.0	30.14	30.10	30.127	0.0	0.0	136	1	SE	1	145			
9																									
10	64.0	57.8	60.9	60.7	53	75	4	0	0	0.00	0.0	29.88	29.83	29.863	0.7	0.7	165	6	S	3	180			
11	59.5	54.4	57.0	56.7	53	88	8	0	0	0.15	0.0	29.88	29.66	29.809	1.3	1.0	69	13	NE	6	45			
12	69.4	57.0	63.2	60.7	58	91	2	0	0	2.32	0.0	29.77	29.59	29.664	1.6	1.2	58	16	ENE	6	67			
13	73.0	51.4	62.2	60.3	53	80	3	0	0	0.00	0.0	29.99	29.76	29.855	1.5	1.4	47	15	NNE	6	150			
14	60.2	49.4	54.8	53.9	48	79	10	0	0	0.00	0.0	30.03	29.96	29.984	1.9	1.8	27	11	NNW	5	341			
15	58.0	49.6	53.8	52.9	50	89	11	0	0	0.13	0.0	30.01	29.81	29.891	1.4	1.3	29	13	E	6	351			
16	63.2	49.2	56.2	55.1	51	87	9	0	0	0.50	0.0	29.81	29.56	29.629	0.6	0.3	273	11	N	6	223			
17	69.9	43.8	56.9	57.6	49	75	8	0	0	0.00	0.0	29.61	29.45	29.536	1.1	1.1	219	16	W	6	237			
18	74.7	46.4	60.6	58.9	50	76	4	0	0	0.00	0.0	29.54	29.39	29.461	1.0	0.9	219	12	WSW	8	213			
19	60.7	44.9	52.8	52.6	49	88	12	0	0	0.25	0.0	29.63	29.47	29.526	0.6	0.5	255	12	S	6	271			
20	66.9	40.6	53.8	54.2	43	70	11	0	0	0.01	0.0	29.72	29.55	29.613	1.5	1.5	236	17	WSW	7	226			
21	64.5	39.8	52.1	53.1	40	64	12	0	0	0.01	0.0	29.75	29.52	29.650	2.1	1.6	255	24	WNW	9	217			
22	62.4	41.8	52.1	51.3	35	55	13	0	0	0.00	0.0	29.96	29.75	29.840	2.9	2.5	299	22	W	10	323			
23	65.3	38.3	51.8	52.1	36	56	13	0	0	0.00	0.0	30.01	29.90	29.959	2.4	1.7	317	21	N	9	307			
24	73.2	41.9	57.6	57.7	39	56	7	0	0	0.00	0.0	30.02	29.88	29.952	1.4	1.3	326	18	N	7	358			
25	77.7	41.8	59.8	59.5	48	69	5	0	0	0.00	0.0	29.93	29.73	29.850	0.6	0.6	224	13	W	5	215			
26	73.0	51.9	62.5	64.2	60	85	2	0	0	0.08	0.0	29.76	29.55	29.635	0.1	0.0	97	5	WSW	2	290			
27	81.1	60.2	70.6	68.4	61	80	0	6	0	0.00	0.0	29.96	29.58	29.719	1.0	0.9	353	14	W	6	355			
28	84.7	59.5	72.1	70.5	58	67	0	8	0	0.00	0.0	30.12	29.96	30.066	1.0	0.3	281	8	NE	5	349			
29	89.9*	55.7	72.8	73.2	62	71	0	8	0	0.00	0.0	30.12	29.95	30.044	0.6	0.4	248	8	NNE	4	234			
30	87.4	63.1	75.3*	75.3	64	72	0	10	0	0.00	0.0	30.17	29.99	30.064	0.9	0.6	84	10	N	5	68			
31	80.1	62.6	71.4	67.4	62	83	0	7	0	0.00	0.0	30.17	30.06	30.125	0.4	0.3	181	11	S	6	188			
Sum	Sum	-----	-----	---	----	Ttl	Ttl	Number of Days		For the month:															---
2129	1447					195	41			3.45	0.0	30.35	29.39	29.841	1.2	0.5	328	24	WNW	10	323				
Avg	Avg	Avg	Mean	Avg	Avg	----	----	Precip		Season Ttl	Date	Date	-----	----	----	----	----	Date	Date	Avg					
71.0	48.2	59.6	59.0	48	70.4	----	----	≥.01 inch	8	8.10	18.5	1	18	-----	----	----	----	21	22						
Number of Days						Season to Date	Snow, Ice ≥1.0 inch	0	Greatest in 24 Hours and Dates						Greatest Depth on Ground of Snow, Ice Pellets or Ice and Date										
Max Temperature			Min Temperature			2180	46	Thunder	0	Precipitation			Snow, Ice Plts												
≥ 90°F	≤ 32°F	≤ 32°F	≤ 0°F	----	----	Heavy Fog	0	2.47	11-12	0.0	-	0						-							
1	0	0	0	----	----	Clear	30	Partly Cloudy	0	Cloudy	0														

NOTES:

Units are: Temperature=°F, Wind=mph, Pressure=Inches Hg, Precipitation=inches.
 Data in column 4A are (MAX+MIN) ÷ 2, whereas columns 4B, 5, 6, 15, 16, 23 are means via continuous observations for 24 hours.
 Column 5: Dew point is calculated from temperature and humidity and is continuously averaged for 24 hours.
 Data in columns 9, 10, 12 are entered manually by the station observer.
 Columns 17-18: Resultant wind is calculated by the vector sum of continuous wind observations.
 Column 23: Sunshine index is measured in Watts/m² and is continuously averaged for 24 hours.
 Data in columns 4B, 5, 6, 15, 16, 23 are updated continuously, there by achieving a "true" mean.

OBSERVER NOTES:

May was a relatively cool and tranquil month, marked by one major rainfall event, a couple of significant cold front passages, and a lack of thunderstorms.

OBSERVATIONS AT 3-HOUR INTERVALS

May 2006: Oakland, NJ

Hour	MAY 19									MAY 20									MAY 21								
	Sunshine	Pressure	Rainfall rate	Temperature	Dew Point	Humidity	Direction	Speed	Gust	Sunshine	Pressure	Rainfall rate	Temperature	Dew Point	Humidity	Direction	Speed	Gust	Sunshine	Pressure	Rainfall rate	Temperature	Dew Point	Humidity	Direction	Speed	Gust
01	29.53	0.00	50	48	95	34	0	0	29.63	0.00	44	43	95	18	0	0	29.71	0.00	46	43	90	19	0	1			
04	29.50	0.00	51	50	95	35	0	0	29.61	0.00	42	41	96	18	0	0	29.71	0.00	42	39	92	19	0	0			
07	29.50	0.06	52	51	96	06	0	0	29.61	0.00	46	45	96	18	0	0	29.70	0.00	44	42	94	19	0	0			
10	29.50	0.00	54	52	91	19	0	1	29.61	0.00	58	47	65	22	3	10	29.67	0.00	61	44	54	22	2	5			
13	29.50	0.00	56	52	87	21	1	5	29.56	0.00	66	41	41	22	3	9	29.58	0.00	63	42	46	25	2	9			
16	29.50	0.00	57	48	71	22	0	4	29.57	0.00	66	41	40	26	5	15	29.53	0.00	63	47	55	25	5	17			
19	29.55	0.00	55	48	76	27	2	7	29.61	0.00	63	39	42	28	2	10	29.60	0.00	59	31	35	00	5	16			
22	29.62	0.00	47	45	93	18	0	0	29.68	0.00	55	44	65	21	1	4	29.73	0.00	51	34	51	31	9	19			
MAY 22									MAY 23									MAY 24									
01	29.76	0.00	46	35	65	33	1	6	29.96	0.00	44	35	73	32	2	6	29.99	0.00	45	41	88	18	0	2			
04	29.76	0.00	46	35	64	28	3	19	29.96	0.00	42	31	67	14	0	1	29.98	0.00	44	41	90	18	1	2			
07	29.81	0.00	46	32	59	19	3	3	29.98	0.00	43	32	64	24	1	4	30.01	0.00	52	40	63	30	3	9			
10	29.84	0.00	51	35	54	30	3	9	29.99	0.00	53	33	48	31	4	14	30.00	0.00	61	41	48	06	2	10			
13	29.84	0.00	57	35	43	04	3	10	29.93	0.00	62	34	35	32	3	10	29.95	0.00	67	39	35	35	2	7			
16	29.82	0.00	62	39	43	26	4	18	29.91	0.00	63	37	39	00	4	10	29.89	0.00	72	34	24	29	4	8			
19	29.88	0.00	56	36	47	32	2	7	29.96	0.00	59	39	47	31	3	7	29.89	0.00	70	33	25	21	2	8			
22	29.94	0.00	49	33	55	24	1	5	29.98	0.00	51	41	71	11	1	2	29.92	0.00	52	43	72	29	0	0			
MAY 25									MAY 26									MAY 27									
01	29.93	0.00	45	41	86	29	0	0	29.75	0.00	58	53	86	30	0	0	29.59	0.00	63	62	96	13	0	0			
04	29.91	0.00	43	41	92	29	0	0	29.70	0.00	53	51	93	30	0	0	29.59	0.00	61	59	96	13	0	0			
07	29.93	0.00	44	42	93	29	0	0	29.71	0.00	54	52	91	30	0	0	29.64	0.00	62	61	97	13	0	0			
10	29.89	0.00	65	46	51	23	0	2	29.65	0.00	69	59	71	33	0	0	29.71	0.00	73	64	74	07	3	6			
13	29.84	0.00	76	43	30	20	1	6	29.63	0.00	68	64	87	28	2	5	29.72	0.00	72	63	75	01	1	1			
16	29.81	0.00	71	51	48	28	0	1	29.59	0.00	69	66	91	06	0	1	29.72	0.00	72	63	75	01	1	1			
19	29.75	0.00	68	57	67	30	1	2	29.55	0.00	72	65	80	18	0	0											
22	29.77	0.00	59	53	82	30	0	0	29.55	0.00	72	65	80	18	0	0	29.91	0.00	70	58	65	35	2	6			
MAY 28									MAY 29									MAY 30									
01	29.97	0.00	66	58	74	07	0	3	30.12	0.00	59	57	92	24	0	0	30.01	0.00	67	64	92	00	0	0			
04	30.01	0.00	62	58	87	07	1	2	30.11	0.00	57	55	94	24	0	0	30.01	0.00	64	62	95	00	0	0			
07	30.07	0.00	61	57	86	09	0	1	30.11	0.00	58	57	95	06	0	0	30.06	0.00	66	64	95	00	0	0			
10	30.11	0.00	70	59	66	31	3	3	30.08	0.00	76	64	67	17	1	3	30.07	0.00	80	67	65	17	0	5			
13	30.11	0.00	80	59	49	10	1	4	30.03	0.00	87	59	38	25	2	5	30.08	0.00	86	64	49	17	1	5			
16									29.98	0.00	88	65	47	05	0	3	30.06	0.00	86	61	42	18	2	6			
19	30.08	0.00	77	60	56	19	1	4	29.95	0.00	85	69	60	23	0	1	30.06	0.00	81	64	56	16	2	6			
22	30.09	0.00	66	58	77	24	0	0	29.99	0.00	73	66	79	00	0	0	30.16	0.00	72	63	72	00	1	9			
MAY 31																											
01	30.14	0.00	67	65	93	00	0	2																			
04	30.14	0.00	64	62	92	03	0	0																			
07	30.17	0.00	63	61	93	01	0	0																			
10	30.17	0.00	63	61	93	01	0	0																			
13																											
16	30.09	0.00	80	62	55	17	3	7																			
19	30.07	0.00	75	62	64	14	0	4																			
22	30.10	0.00	65	59	81	19	0	0																			

WEATHER NOTES

NOTES:

Units are: Temperature=°F, Wind=mph, Pressure=Inches Hg, Precipitation=inches.
 Wind Direction: Directions are those from which the wind is blowing, indicated in tens of degrees from true north: i.e., 09 for East, 18 for South, 27 for West, and 00 or 36 for North.
 Wind Speed: The observed one-minute average speed in miles-per-hour.
 Wind Gust: The maximum instantaneous wind speed for the 10-minute period preceding the observation.
 Rainfall Rate: The instantaneous rainfall rate at the time of observation, calculated by timing consecutive 0.01" pulses from the electronic rain gauge and interpolating this rate for one hour.

SUMMARY BY HOUR

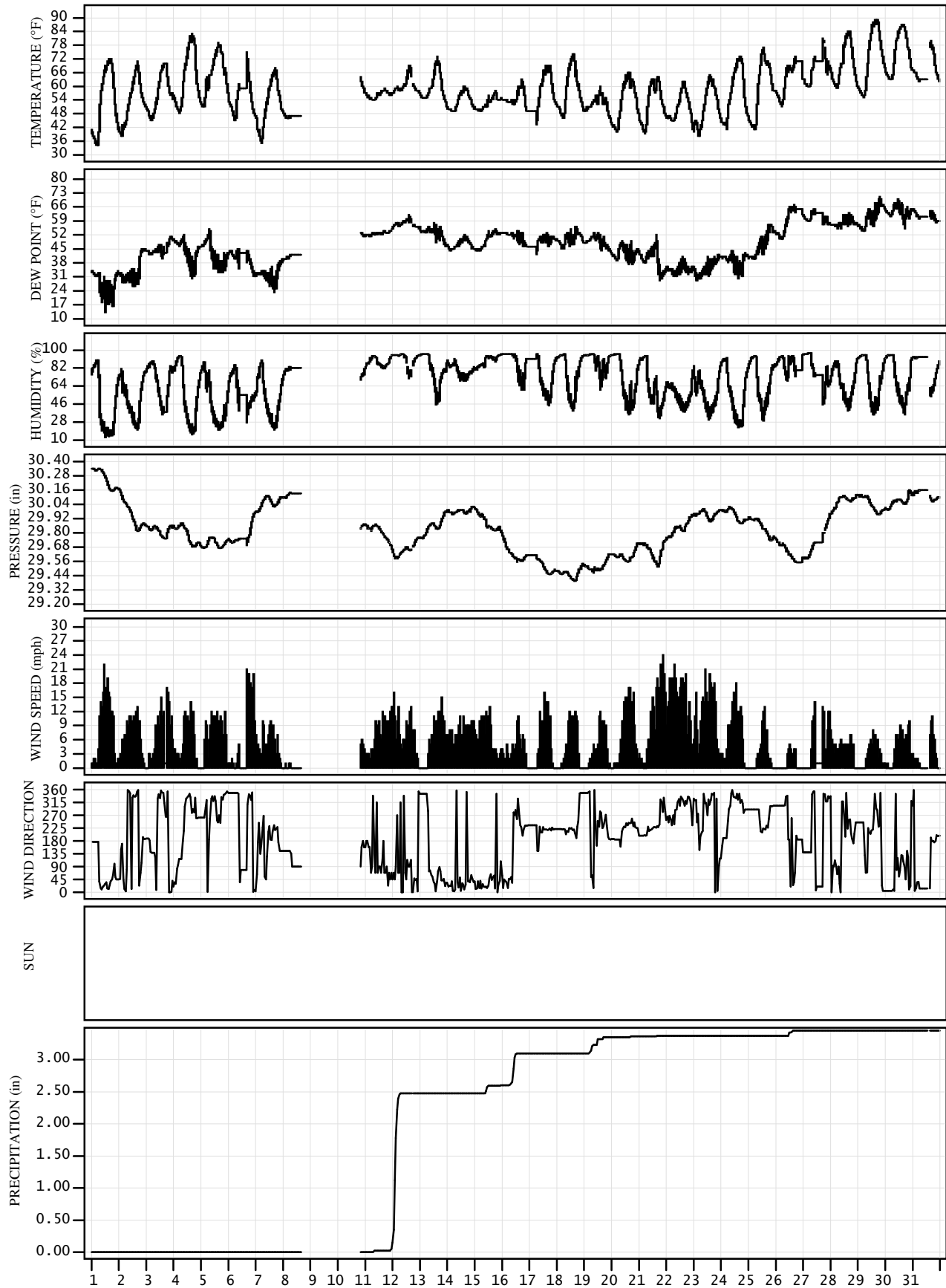
Hour	Averages						Resultant Wind	
	Sunshine	Pressure	Temperature	Dew Point	Humidity	Wind Speed	Direction	Speed
01		29.859	52	47	84	0.4	2	0.2
04		29.844	50	46	87	0.4	36	0.2
07		29.863	51	47	86	0.6	33	0.3
10		29.861	61	48	66	1.7	33	0.3
13		29.820	66	47	55	2.1	34	0.6
16		29.774	69	47	51	2.4	29	0.8
19		29.800	66	47	55	1.8	35	0.5
22		29.850	57	48	74	1.0	34	0.6

HOURLY PRECIPITATION (Water Equivalent) May 2006: Oakland, NJ

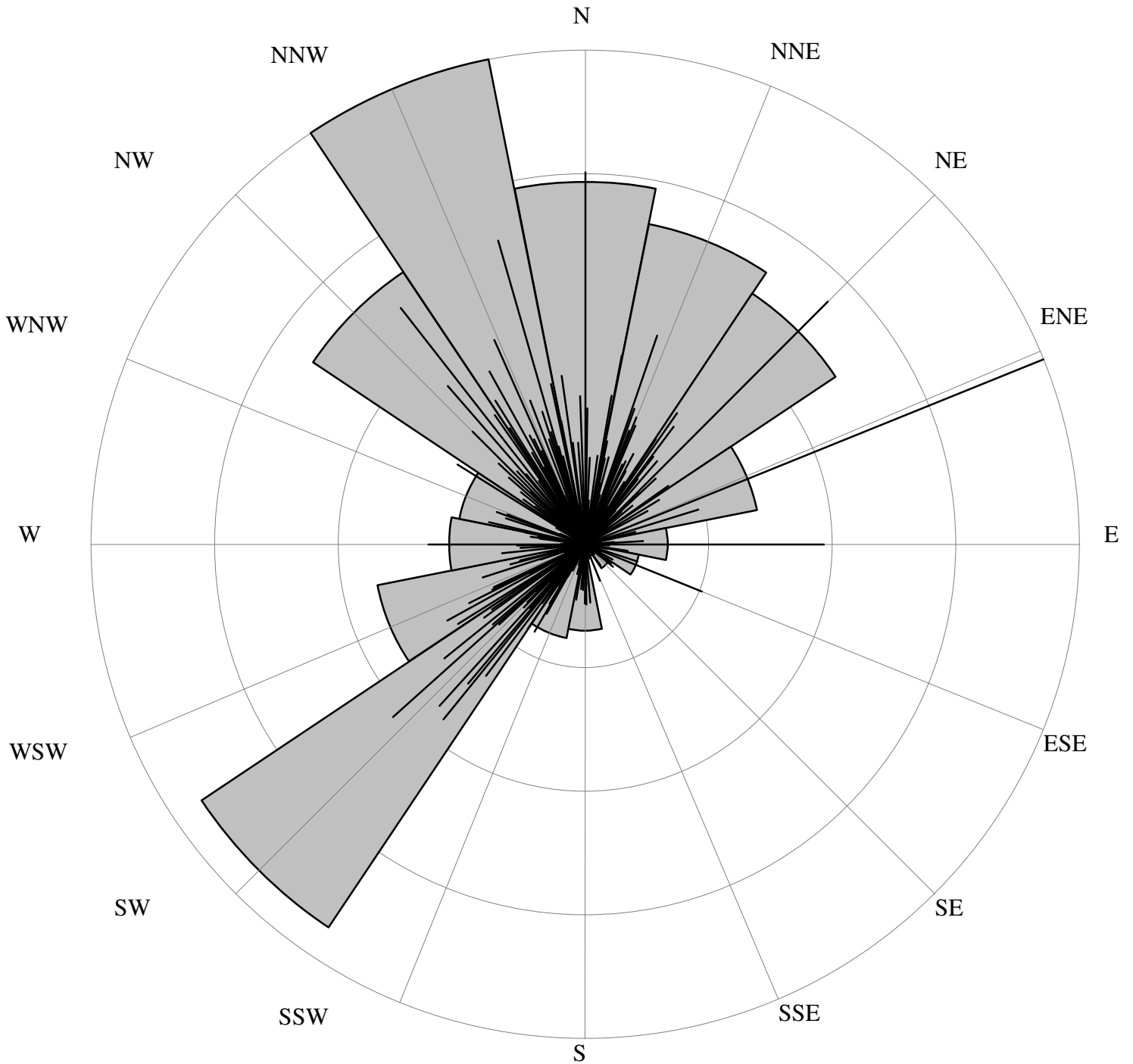
Date	A.M. Hour Ending at												P.M. Hour Ending at												Date
	01	02	03	04	05	06	07	08	09	10	11	12	01	02	03	04	05	06	07	08	09	10	11	12	
01																								01	
02																									02
03																									03
04																									04
05																									05
06																									06
07																									07
08																									08
09																									09
10																									10
11																									11
12	0.20	0.77	0.66	0.44	0.17	0.07	0.01	0.02															0.03	0.10	11
13																									12
14																									13
15																									14
16																									15
17																									16
18																									17
19																									18
20																									19
21																									20
22																									21
23																									22
24																									23
25																									24
26																									25
27																									26
28																									27
29																									28
30																									29
31																									30
31																									31
Sum	0.20	0.77	0.66	0.44	0.18	0.10	0.09	0.06	0.02	0.25	0.23	0.21	0.02	0.01	0.02	0.01	0.04	0.00	0.00	0.00	0.00	0.00	0.04	0.10	Sum

During a frozen precipitation event, hourly precipitation totals may not be recorded. In this case, daily amounts are typically entered in the last column (hour ending at 12 A.M.)

HOUR-BY-HOUR DATA
May 2006: Oakland, NJ



Wind Rose: May 2006
Oakland, NJ



Maximum direction of wind: 24.9 miles from 68°
Maximum sector of wind: 131.6 miles from NNW
874.6 total miles of wind